

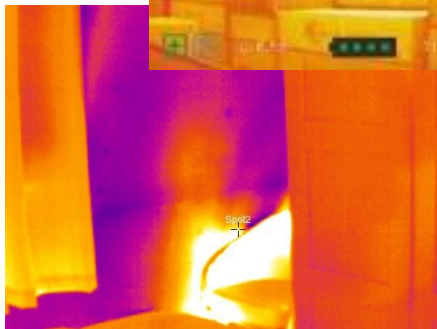


GF5000 Fire Fighting

The GF5000 is SATIR's newest thermal imaging camera designed for the fire fighting industry. It has a 384x288 IR detector which gives the end-user advance level images and video for detailed analysis. The GF5000 has two temperature strips one is static to be used for reference and the other is used to indicate a sudden change in the temperature. The GF5000 has been designed based on USA NFPA standards, meaning that it is ergonomic, made from heat resistance materials, real-time operation and has IP67 encapsulation meaning it is waterproof and dustproof.

Key Features

- 384x288 IR detector
- Design based on USA NFPA Standards
- Long Battery Life of 5 hours
- Fixed Central Spot measurement
- High Frame Rate
- IP67 Encapsulation
- Colour Palettes
- 2m Drop Test



GF5000 Specifications

Image Performance	
Detector type	UFPA
Resolution	384x288
FOV	52°x39°
Spatial resolution	2.4mrad
Thermal sensitivity (N. E. T. D)	50mk ($\leq 0.05^{\circ}\text{C}@30^{\circ}\text{C}$)
Focus	FIXED
Minimum focusing distance	0.5m
Spectral range	8-14 μm
Electronic magnification	1x-4x
Image Presentation	
Display Type	High Temperature Resistance 3.5" TFT LCD Display
Image Mode	Basic Mode/ Enhanced Mode
Video output	NTSC(60HZ) or PAL(50Hz)
Video format	MPEG(thermal/Visual)
Image format	JPG(thermal/Visual)
Image Storage	
Type	Built-in storage (Flash Memory or 16GB SD card)
Temperature Measurement	
Measurement range	-20°C~+250°C, up to +1000°C(optional)
Measurement accuracy	High-Sensitive(-20°C~+250°C): ±2°C or 2% of readings
Measurement mode	Auto hot/cold capture spot , Center point measurement
Alarm	YES
Battery System	
Battery type	High-temperature explosion proof 3.7V Rechargeable Lithium-Ion battery
Battery operating time	>5 hours
Recharging time	2 hours
Low Power Indicator	Yes
Environment Specification	
Operating temperature range	Long time to work: -20°C to +55°C Short time to work: +55°C to +260°C
Encapsulation	IP67
Humidity	10%~95% non-condensing
Shock resistance	25G
Vibration resistance	2G
Water resistance	Under 1 metre, work 30 minutes
Physical Characteristics	
Camera weight	<1.5kg(with Battery)
Camera size(LxWxH)	$\leq 240\text{ mm} \times 109\text{mm} \times 140\text{mm}$
Features	
Ports	Composite port (Recharging、Data、Video Output)
Laser pointer	Yes

Please be aware specifications can be changed without notice.